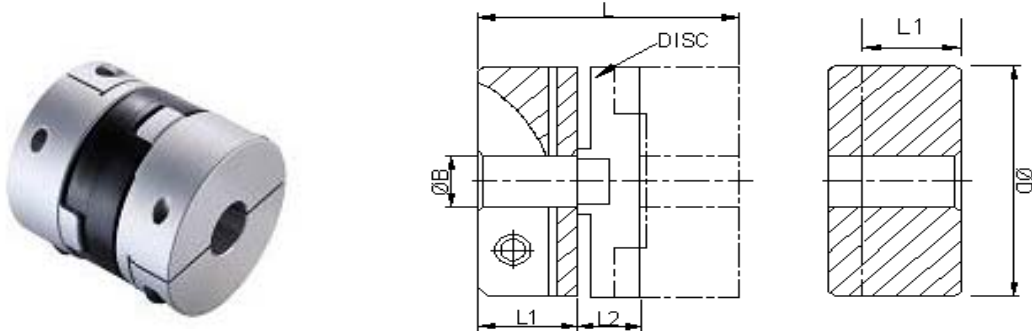


Oldham Couplings Clamp Type



NOTE: To order a complete coupler you must order TWO hubs and ONE Insert.

Specifications:

Code	ØD (mm)	L (mm)	L1 (mm)	L2 (mm)	ØB max (mm)	Screw		Moment of inertia (kgm ² x 10 ⁻⁸)	Mass (g)
						Screw Code	Torque (Nm)		
19	19.1	26	9.4	7.2	8	M2.5	2.33	67	12
25	25.4	32.4	11.6	9.2	12	M3	2.43	252	31
33	33.3	42	15	12	16	M4	5.66	1074	72
41	41.3	50.8	17.8	15.3	20	M4	5.66	3327	148

Materials & Surface Treatment:

Hubs:

Al. Alloy 2014 T6, Clear Anodize or without surface treatment.

Fasteners:

Alloy Steel, black oxide.

Temperature Range:

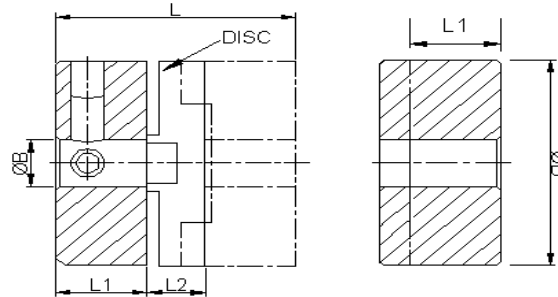
-20°C to +60°C

Performance (AT 20°C WITH STANDARD ACETAL INSERT)

Code	Peak torque (Nm)	Max compensation at 3000 r.p.m.			Torsional Stiffness (Nm/rad)	Static break torque (Nm)
		Angular (deg)	Radial (mm)	Axial (mm)		
19	1.7	0.5	0.2	0.1	115	10
25	4	0.5	0.2	0.1	205	13
33	9	0.5	0.2	0.15	615	53
41	17	0.5	0.25	0.15	1200	57



Oldham Couplings (Aluminum Setscrew type)



NOTE: To order a complete coupler you must order TWO hubs and ONE insert.

Specifications:

Code	ØD (mm)	L (mm)	L1 (mm)	L2 (mm)	ØB max (mm)	Screw		Moment of inertia (kgm ² x 10 ⁻⁸)	Mass (g)
						Screw Code	Torque (Nm)		
19	19.1	26	9.4	7.2	8	M4	2.27	59	13
25	25.4	32.4	11.6	9.2	12	M5	4.62	252	31
33	33.3	42	15	12	16	M6	7.61	1080	67
41	41.3	50.8	17.8	15.3	20	M6	7.61	3177	142

Material & Surface treatment:

Hubs:

Al. Alloy 2014 T6, Clear Anodize or without surface treatment.

Fasteners:

Alloy Steel, black oxidized.

Temperature Range

-20°C to +60°C

Performance (AT 20°C WITH STANDARD ACETAL INSERT)

Code	Peak torque (Nm)	Max compensation at 3000 r.p.m.			Torsional Stiffness (Nm/rad)	Static break torque (Nm)
		Angular (deg)	Radial (mm)	Axial (mm)		
19	1.7	0.5	0.2	0.1	115	10
25	4	0.5	0.2	0.1	205	13
33	9	0.5	0.2	0.15	615	53
41	17	0.5	0.25	0.15	1200	57