



Chengdu Leno Machinery Co., Ltd

Keyless Shaft Locking Assemblies /Locking Devices/Locking Elements/Power Locks

LD220

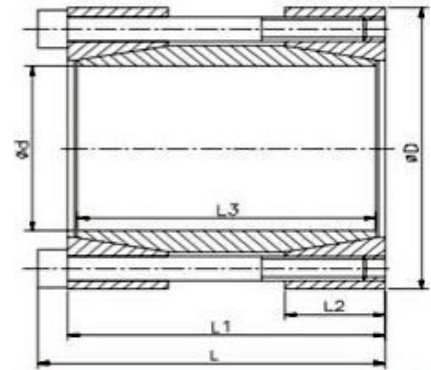
Recommended Application Tolerance:

Shaft: h8

Roughness: Interface 1.6um

Non-interface: 1.6-3.2um

Interchangeable with KLMM, RCK95, TLK500



Dimensions						Transmissible Axial Force	Transmissible Torque	Interface Pressure(N/mm ²)	Locking Screws (DIN912, Grade12.9)		
mm	mm	mm	mm	mm	mm	KN	Nm	Bore/shaft	Quantity	Size	Tightening
Φd	ΦD	L	L1	L2	L3	Ft	Mt	P	n	Code x length	Torque Nm
15	45	56	50	16	44	21	158	188	4	M6x45	17
16	50	56	50	16	44	21	168	176	4	M6x45	17
17	50	56	50	16	44	21	179	166	4	M6x45	17
18	50	56	50	16	44	21	190	157	4	M6x45	17
19	50	56	50	16	44	21	200	149	4	M6x45	17
20	50	56	50	16	44	21	211	141	4	M6x45	17
24	55	66	60	18.5	54	32	378	144	6	M6x55	17
25	55	66	60	18.5	54	32	394	138	6	M6x55	17
28	60	66	60	18.5	54	32	442	123	6	M6x55	17
30	60	66	60	18.5	54	32	473	115	6	M6x55	17
32	63	66	60	18.5	54	32	505	108	6	M6x55	17
35	75	83	75	22	67	39	682	98	4	M8x70	42
38	75	83	75	22	67	39	741	90	4	M8x70	42
40	75	83	75	22	67	39	780	86	4	M8x70	42
42	78	93	75	22	67	39	819	82	4	M8x70	42
45	85	93	85	24.5	76	59	1317	101	6	M8x80	42
48	90	93	85	24.5	76	59	1405	95	6	M8x80	42
50	90	93	85	24.5	76	59	1463	91	6	M8x80	42
55	94	93	85	24.5	76	78	2147	110	8	M8x80	42
60	100	93	85	24.5	76	78	2343	101	8	M8x80	42
65	105	93	85	24.5	76	78	2538	93	8	M8x80	42
70	115	110	100	29	90	123	4321	116	8	M10x95	83