



Chengdu Leno Machinery Co., Ltd

Keyless Shaft Locking Assemblies /Locking Devices/Locking Elements/Power Locks

LD200

Recommended Application Tolerance:

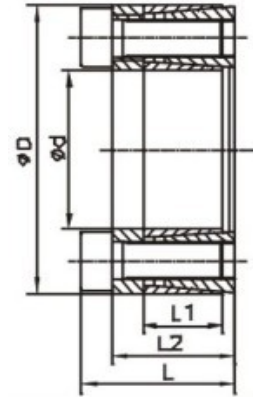
Shaft: h8

Hub: H8

Roughness: Interface 1.6um

Non-interface: 1.6-3.2um

Interchangeable with RCK45



Dimensions					Transmissible Axial Force	Transmissible Torque	Interface Pressure(N/mm ²)		Locking Screws (DIN912, Grade12.9)		
mm	mm	mm	mm	mm	KN	Nm	Bore/shaft	Hub	Quantity	Size	Tightening
Φd	ΦD	L	L1	L2	Ft	Mt	P	P1	n	Code x length	Torque Nm
18	40	24.5	12	18.5	23	207	204	92	6	M6x15	15
19	41	24.5	12	18.5	23	219	193	89	6	M6x15	15
20	42	24.5	12	18.5	23	230	183	87	6	M6x15	15
24	46	24.5	12	18.5	23	276	153	80	6	M6x15	15
25	47	24.5	12	18.5	31	383	196	104	8	M6x15	15
28	50	24.5	12	18.5	31	429	175	98	8	M6x15	15
30	52	24.5	12	18.5	31	460	163	94	8	M6x15	15
35	57	28	15	22	46	805	176	108	12	M6x15	15
38	60	28	15	22	46	874	162	103	12	M6x15	15
40	62	28	15	22	46	920	154	99	12	M6x15	15
42	70	36	18	28	81	1692	202	121	12	M8x22	35
45	73	36	18	28	81	1813	189	116	12	M8x22	35
48	76	36	18	28	81	1934	177	112	12	M8x22	35
50	78	36	18	28	81	2014	170	109	12	M8x22	35
55	83	36	18	28	107	2952	206	136	16	M8x22	35
60	88	36	18	28	107	3221	188	128	16	M8x22	35
70	105	45	22	35	129	4513	155	103	12	M10x25	70
80	115	45	22	35	172	6877	181	126	16	M10x25	70