



## Keyless Shaft Locking Assemblies /Locking Devices/Locking Elements/Power Locks

### LD130

Recommended Application Tolerance:

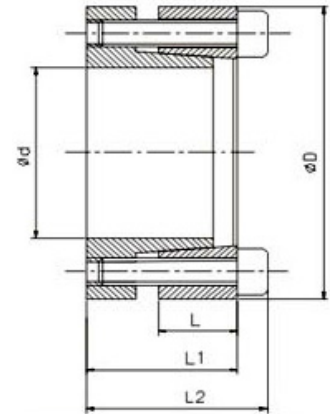
Shaft: h8

Hub: H8

Roughness: Interface 1.6um

Non-interface: 1.6-3.2um

Interchangeable with RCK60



Dimensions					Transmissible Axial Force	Transmissible Torque	Interface Pressure(N/mm <sup>2</sup> )		Locking Screws (DIN912, Grade12.9)		
mm	mm	mm	mm	mm	KN	Nm	Bore/shaft	Hub	Quantity	Size	Tightening
$\Phi d$	$\Phi D$	L	L1	L2	Ft	Mt	P	P1	n	Code x length	Torque Nm
20	47	14	28	34	29	294	328	139	5	M6x25	13
22	47	14	28	34	29	323	298	139	5	M6x25	13
24	50	14	28	34	38	455	353	169	6	M6x25	14
25	50	14	28	34	38	474	338	169	6	M6x25	14
30	55	14	28	34	38	569	282	154	6	M6x25	14
35	60	14	28	34	51	885	322	188	8	M6x25	14
38	65	14	28	34	51	961	297	174	8	M6x25	14
40	65	14	28	34	51	1012	282	174	8	M6x25	14
42	75	18	35	43	76	1594	313	176	7	M8x30	32
45	75	18	35	43	76	1707	293	176	7	M8x30	32
50	80	18	35	43	76	1897	263	165	7	M8x30	32
55	85	18	35	43	87	2387	274	177	8	M8x30	32
60	90	18	35	43	87	2604	251	167	8	M8x30	32
65	95	18	35	43	98	3172	260	178	9	M8x30	32
70	110	24	46	56	141	4937	262	167	8	M10x40	65