



# Chengdu Leno Machinery Co., Ltd

Keyless Shaft Locking Assemblies /Locking Devices/Locking Elements/Power Locks

## LD090

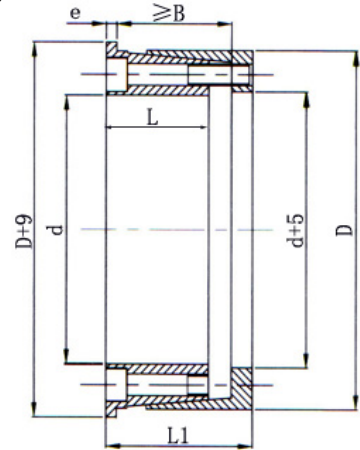
Recommended Application Tolerance:

Shaft: h8

Hub: H8

Roughness: Interface 1.6um

Non-interface: 1.6-3.2um



Dimensions						Transmissible Axial Force	Transmissible Torque	Interface Pressure(N/mm <sup>2</sup> )		Locking Screws (DIN912, Grade12.9)		
mm	mm	mm	mm	mm	mm	KN	Nm	Bore/shaft	Hub	Quantity	Size	Tightening
Φd	ΦD	L	L1	e	B	Ft	Mt	P	P1	n	Code x length	Torque Nm
100	145	54	75	5	65	192	9.6	102	70	8	M12x60	145
110	155	54	75	5	65	191	10.5	93	66	8	M12x60	145
120	165	54	75	5	65	216	13	96	70	9	M12x60	145
130	180	63	84	6	72	287	17.8	100	78	12	M12x70	145
140	190	63	84	6	72	287	20.2	94	69	12	M12x70	145
150	200	63	84	6	72	287	21.6	88	66	12	M12x70	145
160	210	63	84	6	72	360	28.8	101	77	15	M12x70	145
170	225	63	84	6	72	383	32.6	101	76	16	M12x70	145
180	235	63	84	6	72	431	38.8	108	82	18	M12x70	145
190	250	69	94	6	81	493	46.8	106	80	15	M14x75	230
200	260	69	94	6	81	526	52.8	100	77	16	M14x75	230
220	285	69	94	6	81	640	70	119	92	14	M16x75	355
240	305	86	112	7	98	731	88	96	75	16	M16x90	355
260	325	86	112	7	98	822	107	103	82	18	M16x90	355
280	355	94	120	8	106	910	128	96	75	20	M16x100	355
300	375	94	120	8	106	1000	151	99	79	22	M16x100	355
320	405	109	142	8	125	1280	206	101	80	18	M20x120	690
340	425	109	142	8	125	1420	242	106	85	20	M20x120	690
360	455	120	159	8	140	1770	319	113	89	20	M22x130	930
380	475	120	159	8	140	1770	337	109	87	20	M22x130	930
400	485	120	159	8	140	1770	355	101	83	20	M22x130	930
420	515	120	159	8	140	1980	410	107	87	22	M22x130	930