



# Chengdu Leno Machinery Co., Ltd

Keyless Shaft Locking Assemblies /Locking Devices/Locking Elements/Power Locks

## Shrink Discs LD070B

Recommended Application Tolerance:

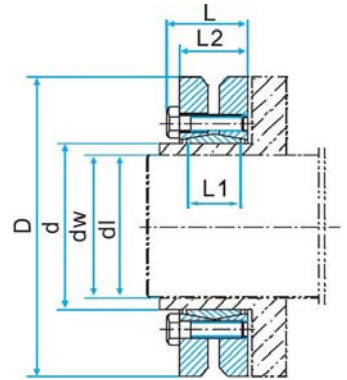
Shaft: h7-h8

Hub: H7-H8

Roughness: Interface 1.6um

Non-interface: 1.6-3.2um

Interchangeable with KLPP, TLK603, RCK19, RFN4061



Dimensions						Max Gap	Transmissible Axial Force	Transmissible Torque	Locking Screws (DIN931, Grade10.9)		
mm	mm	mm	mm	mm	mm	mm	KN	Nm	Quantity	Size	Tightening
Φd	ΦD	Φdw	L1	L2	L	dw-d1	Ft	Mt	n	Code x length	Torque Nm
24	50	19	14	19.5	23	0.017	23	216	6	M5x18	4
		20					27	265			
		21					30	314			
30	60	24	16	21.5	25	0.017	31	372	7	M5x18	4
		25					34	421			
		26					36	461			
36	72	26	18	23.5	27.5	0.032	36.3	471	5	M6x20	12
		28					39.3	550			
		30					47.5	713			
44	80	32	20	25.5	29.5	0.032	57.8	925	7	M6x20	12
		35					67.1	1175			
		36					70.8	1275			
50	90	38	22	27.5	31.5	0.032	69.1	1313	8	M6x25	12
		40					81.9	1638			
		42					91.7	1925			
55	100	42	23	30.5	34.5	0.032	69	1450	8	M6x25	12
		45					84.4	1900			
		48					97.9	2350			
62	110	48	23	30.5	34.5	0.048	116	2775	10	M6x25	12
		50					131	3275			
		52					139	3613			
68	115	50	23	30.5	34.5	0.048	100	2500	10	M6x25	12
		55					114	3125			
		60					131	3938			
75	138	55	25	32.5	37.8	0.048	114	3125	7	M8x30	30
		60					133	4000			
		65					152	4938			
80	145	60	25	32.5	37.8	0.048	133	4000	7	M8x30	30
		65					150	4875			
		70					164	5750			
90	155	65	30	39	44.3	0.048	183	5938	10	M8x35	30
		70					214	7500			
		75					242	9063			
100	170	70	34	44	49.3	0.048	246	8625	12	M8x35	30
		75					250	9375			
		80					281	11250			
110	185	75	39	50	56.4	0.048	240	9000	9	M10x40	59
		80					281	11250			
		85					318	13500			

Add.: No. 8, Section 1, Jinhua Road, Chengdu 610021, China

Tel: +86-28-65998825 Fax: +86-28-84862968

[www.cdleno.com](http://www.cdleno.com) Email: [sales@cdleno.com](mailto:sales@cdleno.com)



# Chengdu Leno Machinery Co., Ltd

Dimensions						Max Gap	Transmissible Axial Force	Transmissible Torque	Locking Screws (DIN931, Grade10.9)		
mm	mm	mm	mm	mm	mm	mm	KN	Nm	Quantity	Size	Tightening
Φd	ΦD	Φdw	L1	L2	L	dw-d1	Ft	Mt	n	Code x length	Torque Nm
115	188	85	39	50	57	0.048	271	11500	10	M10x40	59
		90					350	15750			
		95					395	18750			
125	215	85	42	54	60.4	0.069	324	13750	12	M10x40	59
		90					361	16250			
		95					395	18750			
140	230	95	46	60.5	68	0.069	397	18875	10	M12x45	100
		100					440	22000			
		105					479	25125			
155	265	105	50	64.5	72	0.069	524	27500	12	M12x50	100
		110					568	31250			
		115					609	35000			
165	290	115	56	71	81	0.069	674	38750	8	M16x55	250
		120					729	43750			
		125					780	48750			
175	300	125	56	71	81	0.079	720	45000	8	M16x55	250
		130					788	51250			
		135					833	56250			
185	330	135	71	86	96	0.079	963	65000	10	M16x55	250
		140					1018	71250			
		145					1069	77500			
195	350	140	71	86	96	0.079	1161	81250	12	M16x55	250
		150					1267	95000			
		155					1315	101875			
200	350	150	71	86	96	0.079	1233	92500	12	M16x65	250
		155					1290	100000			
		160					1344	107500			
220	370	160	88	104	114	0.079	1484	118750	15	M16x75	250
		165					1545	127500			
		170					1618	137500			
240	405	170	92	109	122	0.079	1765	150000	12	M20x80	490
		180					1917	172500			
		190					2053	195000			
260	430	190	103	120	133	0.09	2158	205000	14	M20x90	490
		200					2300	230000			
		210					2440	256250			
280	460	210	114	134	147	0.09	2583	271250	16	M20x100	490
		220					2773	305000			
		230					2935	337500			
300	485	230	122	142	155	0.09	2989	343750	18	M20x100	490
		240					3073	368750			
		245					3214	393750			
320	520	240	122	142	155	0.09	3250	390000	20	M20x100	490
		250					3400	425000			
		260					3596	467500			
340	570	250	134	156	169	0.101	3900	487500	24	M20x110	490
		260					4063	528125			
		270					4259	575000			
350	580	270	140	162	175	0.101	4093	552500	24	M20x110	490
		280					4286	600000			
		285					4386	625000			



# Chengdu Leno Machinery Co., Ltd

Dimensions						Max Gap	Transmissible Axial Force	Transmissible Torque	Locking Screws (DIN931, Grade10.9)		
mm	mm	mm	mm	mm	mm	mm	KN	Nm	Quantity	Size	Tightening
Φd	ΦD	Φdw	L1	L2	L	dw-d1	Ft	Mt	n	Code x length	Torque Nm
360	590	280	140	162	175	0.101	4134	578750	24	M20x110	490
		290					4328	627500			
		295					4424	652500			
380	645	290	144	168	183	0.101	4888	708750	20	M24x120	840
		300					5083	762500			
		310					5306	822500			
390	660	300	144	168	183	0.101	5200	780000	21	M24x120	840
		310					5411	838750			
		320					5609	897500			
400	680	315	144	168	183	0.111	5317	837500	21	M24x120	840
		320					5430	868750			
		330					5636	930000			
420	690	330	164	188	203	0.111	5909	975000	24	M24x130	840
		340					6176	1050000			
		350					6429	1125000			
440	750	340	177	202	217	0.111	5926	1007500	24	M24x140	840
		350					6143	1075000			
		360					6368	1146250			
460	770	360	177	202	217	0.111	6944	1250000	28	M24x140	840
		370					7230	1337500			
		380					9211	1750000			
480	800	380	188	213	228	0.111	7697	1462500	30	M24x140	840
		390					7949	1550000			
		400					8188	1637500			
500	850	400	188	213	230	0.123	7213	1442500	24	M27x150	1100
		410					7405	1518000			
		420					7619	1600000			
530	910	430	213	238	255	0.123	10581	2275000	30	M27x160	1100
		440					11023	2425000			
		450					11444	2575000			
560	940	450	228	260	277	0.123	11111	2500000	30	M27x160	1100
		460					11576	2662500			
		470					12021	2825000			
590	980	470	254	286	303	0.123	11968	2812500	36	M27x170	1100
		480					12500	3000000			
		490					13010	3187500			
620	1020	500	260	292	311	0.136	13500	3375000	30	M30x190	1640
		510					14020	3575000			
		520					14519	3775000			
660	1070	530	260	292	311	0.136	14623	3875000	30	M30x190	1640
		540					15185	4100000			
		550					15727	4325000			
700	1180	560	278	310	329	0.136	15402	4312500	36	M30x190	1640
		575					16087	4625000			
		590					16737	4937500			
750	1250	600	296	334	355	0.136	18333	5500000	40	M30x200	1640
		615					19106	5875000			
		630					19841	6250000			
800	1370	645	332	370	389	0.154	20930	6750000	45	M30x210	1640
		660					21780	7187500			
		670					22761	7625000			