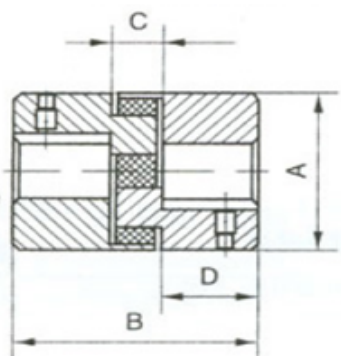


L Coupling



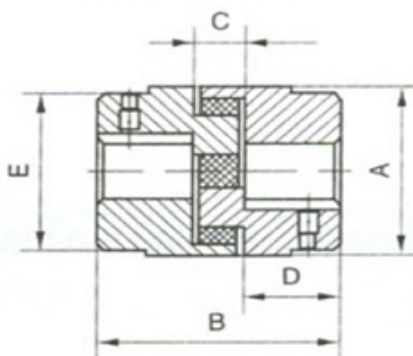
- Good temperature and oil resistance
- Free of maintenance
- Simple structure and easy to install
- The rubbers can be individually replaced when they are worn
- Standard products are finished bore and pilot bore

L035 - L110



L035-L110 are made of sintered alloy, with smooth surfaces and precise dimensions.

L150 - L276



L150-L276 are made of GG25 material. The surface is machined and phosphated.

Code	Dimensions					Torgue needed (kgm)	Rotational Speed (rpm)	Bore Max (mm)	Mass(kg)
	A	B	C	D	E				
L035	16	21	8	6.5	-	0.05	30,000	9	0.03
L050	28	45	12	15.5	-	0.3	17,000	16	0.13
L070	35	51	13	19	-	0.5	13,000	19	0.24
L075	45	55	13	20.5	-	1.0	10,000	24	0.40
L090	54	55	13	21	-	1.6	9,000	25	0.68
L095	54	64	13	25.5	-	2.2	9,000	29	0.71
L099	65	73	19	27	-	4.5	7,000	35	1.22
L100	65	89	19	35	-	5.0	7,000	35	1.40
L110	84	108	22	43	-	9.0	5,000	42	3.0
L150	96	115	25	45	80	15.0	5,000	48	5.0
L190	115	134	25	54	102	20.0	5,000	54	7.6
L225	127	154	26	64	108	30.0	4,200	67	9.0
L276	157	200	41	79	127	54.2	4,200	73	21.0

Keyway dimensions conform to DIN6885, JIS B1310-1976, UNI 6604-1969.

GB1095-1979 standards.

Inch and Metric finished bore with keyway and setscrew available.